

Saccaro

Collection

2025_2



saccaro®



habitat
of the soul

Design that inhabits.
Matter that transforms.

saccaro[®]

At Saccaro, each collection is born from the encounter between form, function, and feeling. These are pieces that interpret contemporary living with artisanal soul, Brazilian tradition, and universal sophistication. The 2025₂ Collection invites you to explore new ways of inhabiting spaces—both indoors and outdoors—with creations that

move between the lightness of the essential and the strength of the handmade. With renowned signatures and inspiring new designs, we present furniture and accessories that reveal stories through materials, time, and touch. Everything is crafted to connect people, environments, and emotions.

habitat
of the soul

INDOOR



SPACES THAT EMBRACE.
DESIGN THAT EXPRESSES.

The pieces of the Indoor Collection 2025_2 embody the sensorial elegance and attention to detail that define Saccaro. In every chair, sofa, bench, or headboard, there is a fusion of the designers' creative

vision and the artisan's soul. These pieces naturally and harmoniously embrace different styles, becoming the silent protagonists of welcoming, fluid, and authentic spaces.



006

High and Low Swivel Stool

A

R

M

Y

Design
VINÍCIUS SIEGA



Lightness suggested in continuous curves.
A seat that seems to float above the elegance of wood.

007



Chair with Arms

P A N T A N A L

Design
ROQUE FRIZZO



Curves that evoke the serenity of water and the strength of the earth. Pantanal is memory shaped in wood and leather. Pantanal is visual poetry — a piece that overflows with identity, memory, and natural beauty.

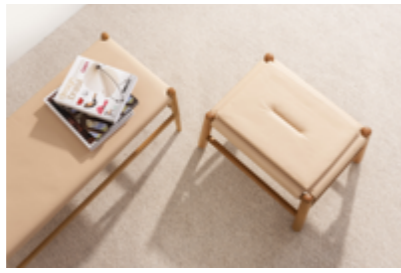


Collection

P A T A G Ô N I A

Design
BRUNO FAUCZ





Forms that tell stories of journey, time, and landscape.
Patagonia conveys heritage and contemplation in every detail.

Armchair

H A L O

Design
STUDIO SACCARO



016

Lightness that orbits gently.
Halo unites comfort and visual poetry.

017



TO EACH INHABIT SPACE IS TO TRANSFORM INTO FEELING





The lightness of the morning translated into form. Alba combines visual lightness and sophistication. With minimalist lines and balanced proportions, it reveals the influence of Scandinavian design in dialogue with the Brazilian artisanal soul.



Chair and High and Low Stool

A

L

B

A

Design
ARCELO LIGIERI



020

021



Bench and Side Table

S E I V A

Design
STUDIO SACCARO





Solid reforested wood textures that reveal time and origin. Seiva pulses nature in its essential state. Seiva is the connection between humans and nature expressed through design.



Pouf

D O N A T O

Design
STUDIO SACCARO

Casual in spirit, sophisticated in details. The new Donato pouf complements the collection and invites freedom in compositions.

Headboard

D U E T O

Design
STUDIO SACCARO



Surfaces that embrace with elegance. Dueto revisits the quilted design in form and texture, now also available in a version for single beds.

habitat
of the soul

OUTDOOR



NATURE AS INSPIRATION.
**DESIGN AS AN EX-
TENSION OF LIVING.**

Saccaro's new outdoor collection celebrates the connection between the natural and the essential. These pieces are designed to be lived in under the sun, wind, and weather, without losing sophistication or comfort. With durable ma-

terials, organic forms, and an aesthetic that evokes the landscape, the 2025_2 Collection transforms outdoor areas into contemporary retreats—where time slows down and every moment is lived intensely.



Dining, Coffee, and Side Tables (new Fusing glass top)

A **Y** **T** **Y**

Design
ROQUE FRIZZO



Living material that inhabits with nobility and permanence.
Ayty is a shelter for time and the gaze.



2- and 3-Seater Sofa

M Y K O N O S

Design
STUDIO SACCARO

Breeze, light, and rest in generous forms.
Mykonos celebrates the dolce far niente outdoors.



Coffee and Side Tables with new concrete or marble tops

M A O R I

Design
STUDIO SACCARO



036



Ancestral symbols in sculptural forms.
Maori transforms material into art with a ritual presence.

037



Benches and Stools

D O U R O

Design
STUDIO SACCARO





Solidity and simplicity that embrace with naturalness. Douro evokes the essence of wood and a slower pace of time.





ACCESSORIES



TOUCHES THAT FULFILL.
DETAILS THAT
TELL STORIES

The accessories of the 2025₂ Collection reveal the value of sensitivity, of gesture, of material. rich the experience of living. These pieces expand the home's sensory repertoire and reinforce Saccaro's curatorial vision, with tactile elegance and artisanal authenticity. Cushions, throws, lamps, and vases bring textures, colors, and forms that en-

Table Lamp

A

Y

T

Y

Design
STUDIO SACCARO



Raw texture, soft light, artisanal soul.
Cruda is poetry shaped by hand.



Outdoor Cushions

Saccaro's outdoor cushion collection was created to complement outdoor spaces with lightness, comfort, and Mediterranean poetry. Inspired by Italian words that evoke the sea, the sky, and the landscape, each name carries sensations of breeze and freedom.



RETE

From "net" in Italian, it refers to texture and artisanal weaving.



LUNGOMARE

It alludes to the seaside avenue, evoking the stroll, the horizon, and the relaxation of the senses.



STELLA

"Star" in Italian, it represents the gentle glow that accompanies moments under the open sky.

Indoor Cushions

Saccaro's indoor cushions expand the tactile and aesthetic repertoire of interior spaces. With noble fabrics, poetic names, and finishes that highlight handcrafted details, they invite touch and contemplation—complementing living with comfort, elegance, and personality.

Leather Cushions

Sophisticated and durable, they convey tactile elegance and a strong presence.



GESTO

The name celebrates the manual movement, the touch that gives rise to the form.



TRAPUNTA

From the Italian "quilted," it refers to the matelassé technique, with classic charm and timeless comfort.

Suede Cushions

With a soft touch and refined appearance, the suede cushions feature names that celebrate textures and structures found in architecture and nature.



SCANDOLA

It refers to the wooden roof typical of Alpine buildings.



FREGIO

An ornamental “frieze” that reveals detail as art.

050



MAGLIA

“Malha” in Italian, suggests flexibility and coziness.



SCAGLIA

“Escama” evokes the skin of nature in its mineral form.



TELLAIO

“Tear” connects the textile to the technique.

051

Cotton Cushions

Made of natural cotton, these pieces express lightness and raw material with sensitivity.



COTONE

Simple and straightforward, “cotone” in Italian.



FILATO

“Spun thread” highlights the process and the essential material of the textile.

Wool Cushions

Warm and textured, they evoke the feel of wool and the imagination of handmade craftsmanship.



LANA

“Wool,” in its essence.



ROCCA

Name of the old spinning wheel, a symbol of textile craftsmanship.



BOUCLÉ

Fabric with loops that create a fluffy and enveloping texture.

Plain Cushions

Minimalist, with a focus on touch and materiality.

TATTO

From “tact” in Italian, it focuses on the tactile experience.



BIANCOPELO

A combination of “white” and “hair,” suggesting visual lightness and soft texture.

Indoor Throws

They accompany the cushions as complementary pieces of comfort and sensory elegance.



BOUCLÉ

Same concept as the cushion: rich texture, contemporary visual.



LANA

Pure, enveloping wool.

ROCCA

It celebrates the thread and the tradition of spinning.



SOTTILE

“Fina” in Italian. An invitation to softness and subtlety.

Outdoor Vases

In partnership with Una Vasos, combining the ancient Egyptian braiding technique with Brazilian minerals. Ancestral weaving, contemporary soul. Una vases are sculpture, material, and history.



ATHENA



TURIM

VIENA



DANÚBIA



SICÍLIA



ITÁLIA



BALI



CAPRI



MUNIQUE



BASE PRATO

Vase Finishes

The vases feature finishes that highlight textures, contrasts, and a wide range of tones. Each variation carries the essence of handcrafted work, emphasizing the uniqueness of each piece and expanding its compositional possibilities.

Textures



Steel



Royal Blue



Suede



Copper



Jade



Moss



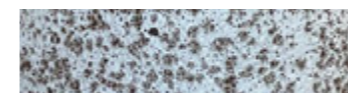
Off White



Black



Recife



Recife Brown



Tiffany



Vulcan



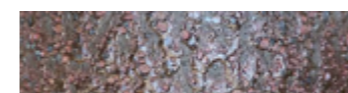
Vulcan Black



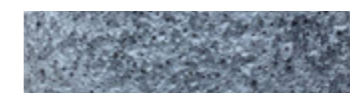
Vulcan Blue



Vulcan Olive

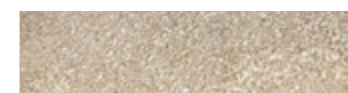


Vulcan Oxi



Vulcan Silver

SAND



Sand



Dark Sand



Rust Sand

saccaro[®]